



# MAPINFO PROFESSIONAL v9.0

More Powerful Data Access and New Temporal Analysis Capabilities



Get up to the latest version of MapInfo Professional. Leverage the expanded data access capabilities, temporal analysis, improvements to map readability and more!

## SUMMARY

MapInfo Professional version 9.0 enables you to accelerate your analysis through an assortment of new features.

- Access over 150 file formats of business and geographic data
- Leverage new, time-based analysis capabilities
- Create better looking maps using new templates, fonts and curved labelling
- Increase your productivity by using wizard-based processes and new preference settings

## BENEFITS

- Use almost any business and geographic data
- Simplify data management, save time and avoid unnecessary duplication of data
- Create professional-looking maps that are easy to understand
- Explore the relationship between location and time- or event-based activity

## Overview

MapInfo Professional version 9.0 is the latest release of the most powerful yet easy-to-use desktop location intelligence solution available. Direct access to new data including ESRI SDE and GeoDatabase and the latest CAD formats lets you use MapInfo Professional in conjunction with colleagues and other applications without the need to convert data. Rounding out this release are capabilities to perform time- and event-based analysis, features that improve your productivity by streamlining commonly performed tasks, and functionality to help you create better looking, easy to understand maps.

### Powerful Data Access

MapInfo Professional's enhanced ability to access data directly from multiple data sources enables you to apply the power of location analysis to your data directly in its original format. You can open customer data from an Excel file, infrastructure layouts from CAD files and geographic SDE and GeoDatabase files. Because no conversion is needed, this saves you time and lets you get to your analysis quicker. Supported formats and databases include:

- Industry standard geographic data such as engineering or town planning CAD data (the latest DWG/DXF, DGN, SDTS and VPF formats)
- ESRI Shape, Grid, SDE, Eoo and GeoDatabase data formats

- Oracle support including Oracle 10G, Oracle 10G Locator and Oracle 9iR2
- Microsoft support including MS Access 2003, MS Excel 2003 and MS SQL Server 2000 and MS SQL 2005

On-the-fly data indexing provides you with greater usability of remote data. Extensible data access technology extends the supported data access formats based on need giving you a rich data access engine that supports the ability to open virtually any data format.

In addition, you can save a map window as a geographically encoded image in GeoTIFF format. This is helpful when you need to exchange information with other location aware applications.

### Time-Based Analytics

Time-based analysis is possible due to a number of additions. The MapInfo data format now includes new date/time and time attributes. When accessing data from MS Excel, MS Access and relational database systems, MapInfo Professional automatically recognises data fields that contain time or date/time information and uses the appropriate data type in the MapInfo table. MapInfo Professional includes functions to convert both numeric and character string data into time or date/time values.



# MAPINFO PROFESSIONAL v9.0

The support for date/time and time data is comprehensive and opens up many new visualisation and analytical possibilities. New functions include the ability to obtain the system time, format time data and extract portions of information such as the minutes, seconds or hours from time data. These capabilities increase the flexibility and utility of the time data and increase the analytical capabilities. Time and date/time fields can be used in thematic maps and can be searched or queried against. This makes it possible to perform analysis incorporating data from a range of time values; for example, crime incidents that occurred between 11:00 p.m and 5:00 a.m.

MapBasic fully supports the new time and date/time data formats. This means that the open table capabilities work with time data and existing functions that return information about a table (such as the type of data each field contains). This allows you to build MapBasic applications incorporating the time component of your data.

## Improved Visualisation

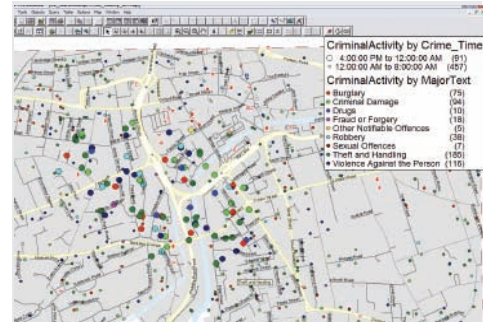
There are several additions that help you create professional-looking maps that are easy for people to quickly understand. These include:

- Curved labeling
- Homeland security and emergency management fonts/symbols
- Enhanced layout settings
- Print templates that utilise dynamic information so they update on-the-fly

## Increased Productivity

There are many enhancements and additions to help you perform your analysis more quickly and get to results faster. Some of these are:

- Wizard-based processes for producing professional quality output
- Multiple hotlink support from a single record



Use time-based analysis to understand how crime migrates from daytime to night-time in order to better deploy resources.

- New preferences for managing Layout and Legend windows
- New preferences for Find Selection behaviour
- Improved behaviour for default label style
- Window Manager tool enhancements

## Enhanced Connectivity

MapInfo Professional also includes MapBasic support for HTTP, XML and FTP connectivity to web services. You can access enterprise solutions and directly connect to powerful web services enabling you to take full advantage of your existing resources. Through menu options, you can also connect to Envinsa or hosted Envinsa Online Services (EOLS) to perform batch geocoding and address lookup or to create driving regions. In addition, you can directly access MapMarker for geocoding and address lookup.

In addition, MapBasic support for HTTP, XML and FTP enables you to connect to further services including RSS feeds, such as Yahoo traffic, and XML interfaces to enterprise applications such as SAP or Business Objects. You also can communicate with FTP services to dynamically download data.

FOR MORE INFORMATION ON MAPINFO PROFESSIONAL VERSION 9.0 INCLUDING STREAMING VIDEO OVERVIEWS OF FEATURES AND A FREE, DOWNLOADABLE EVALUATION VERSION, VISIT [WWW.MAPINFO.CO.UK/GETUP](http://WWW.MAPINFO.CO.UK/GETUP)

### Pitney Bowes MapInfo

#### EMEA/UK

Minton Place  
Victoria Street, Windsor  
Berkshire, SL4 1EG UK

Tel: +44 (0)1753 848200  
Fax: +44 (0)1753 621140

[europa@mapinfo.com](mailto:europa@mapinfo.com)  
[www.mapinfo.co.uk](http://www.mapinfo.co.uk)

#### SWEDEN—SOLNA

[sweden@mapinfo.com](mailto:sweden@mapinfo.com)

#### MAPINFO BENELUX—NETHERLANDS

[benelux@mapinfo.com](mailto:benelux@mapinfo.com)

#### MAPINFO GMBH—RAUNHEIM

[germany@mapinfo.com](mailto:germany@mapinfo.com)

#### MAPINFO SPAIN—MADRID

[spain@mapinfo.com](mailto:spain@mapinfo.com)

#### MAPINFO ITALY—ROMA

[italia@mapinfo.com](mailto:italia@mapinfo.com)

#### MAPINFO AFRICA

[africa@mapinfo.com](mailto:africa@mapinfo.com)

#### MAPINFO MIDDLE EAST

[middleeast@mapinfo.com](mailto:middleeast@mapinfo.com)

#### MAPINFO EASTERN EUROPE

[easterneurope@mapinfo.com](mailto:easterneurope@mapinfo.com)

MapInfo Corporation is  
Headquartered out of Troy, NY, USA

  
Be Location Intelligent