

VERSION COMPARISON: MAPINFO PROFESSIONAL®



Get up to the latest version of MapInfo Professional. Leverage the expanded data access capabilities, temporal analysis and features to improve map readability.

What does v9.0 bring in comparison to previous versions?

MapInfo Professional 9.0 adds:

MapInfo Professional®, the industry's leading business mapping solution, enables you to perform sophisticated and detailed data analysis to drive insightful decisions. MapInfo Professional v9.0 provides you with powerful tools to access a wide variety of business and geographic data, new functionality for doing time- and event-based analysis, features to help you make visually appealing maps, and productivity advances so you can get to your analysis more quickly. Get up to the latest version of MapInfo Professional!

Supported Operating Systems

DESKTOP OPERATING SYSTEMS:

- Windows Vista (Ultimate)
- Windows XP Professional SP2
- Windows XP Home SP2
- Windows XP (64-bit)
- Windows 2000 SP4

SERVER OPERATING SYSTEMS

- Windows 2003 Server
- Citrix Meta Frame v4.x

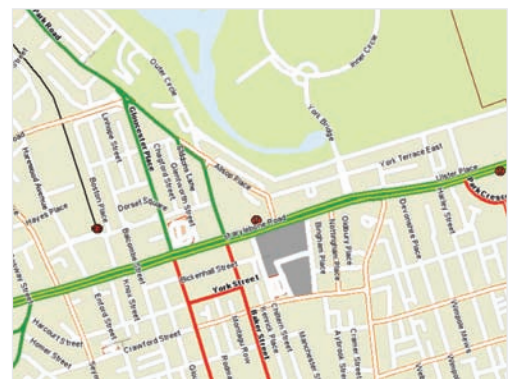
ADDITIONAL DEPLOYMENT CAPABILITIES:

- Silent install capability using Microsoft Windows technology
- Option to centralise user customisable files for company or department level collaboration

Data Access

DATA FORMATS: Added direct access capability for: DWG, DXF, DGN, ESRI GeoDatabase, ESRI Personal GeoDB (MDB), SDTS and VPF.

Extensible data access can provide support to over 150 formats as needed.



Employ curved labelling, new fonts and enhanced layout settings to create better looking maps.

DATABASE SUPPORT: Oracle 10G and 9iR2, MS SQL Server 2000 & 2005, MS Access XP, IBM Informix 9.4.

SPATIAL DATA SUPPORT: Oracle Spatial 10G & 9iR2, SQL Server 2000 & 2005 with MapInfo SpatialWare, Informix 9.4 with MapInfo SpatialWare, ESRI SDE v9.X and higher.

SAVE WINDOW AS: GeoTIFF (geographically referenced image)

SUPPORT FOR: Date/Time and Time data values

ON-THE-FLY INDEXING: Find and Geocode functions now work with both indexed and non-indexed fields, when working with both TAB files and remote tables.

MapInfo Professional 9.0 adds: CONTINUED

Better Looking Maps

- Curved labelling
- New emergency management fonts
- New preference to set default label font/style
- New map preferences for searching and inserting map objects

Enhanced Analysis

MapInfo Professional's new time based analysis capabilities allow organisations to benefit from MapInfo Professional in new ways. MapInfo Professional will now recognise and preserve time and Date&Time based data from a number of data sources and this data can be visualised and analysed using the full range of MapInfo Professional capabilities.

Improved Productivity

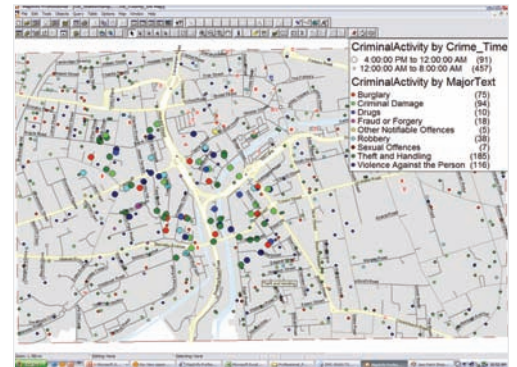
- Wizard based process for producing professional quality output
- Multiple hotlink support from a single record
- New Legend window preferences
- New Layout window preferences
- New preferences for find selection behaviour
- Window Manager tool enhancements

Datum Enhancements

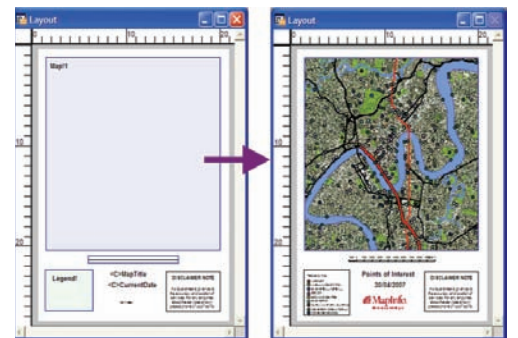
- Czech Republic and Slovakia JTSK Projection
- Bosnia-Herzegovina Coordinate Systems

Improved Help and Documentation

- Updated help includes all reference information
- MapBasic help support from the MapBasic window



Use time-based analysis to understand how crime migrates from daytime to night-time in order to better deploy resources.



New print templates utilise dynamic information to update on-the-fly.

MapBasic Enhancements:

ADDED THE FOLLOWING FUNCTIONS:

CoordSysName\$(); CurDateTime; CurTime;
 FormatTime\$; FME Refresh Table statement;
 GetDate(); GetTime(); HotlinkInfo(); Hour
 function; MakeDateTime(); Minute function;
 NumberToDateTime(); NumberToTime();
 RegionInfo() Function; Second function;
 StringToDateTime(); StringToTime();

ENHANCED THE FOLLOWING FUNCTIONS AND STATEMENTS:

Commit Table statement
 LabelInfo() function
 LayerInfo () function
 Set Map statement
 SystemInfo() function

MapInfo Professional 8.5 added:

Platform Support

Windows 2000
Windows XP logo (Professional and Home support)
Support for installation on Windows 2003 Server, Terminal Services and Citrix
Validation on Windows XP 64Bit in 32Bit compatibility mode
Silent install support using Microsoft Windows Installer technology

Data access

WEB SERVICES: Connectivity to MapInfo Envinva for Street Level Geocoding (location enablement), find address and Drive Region

MapInfo Map Marker connectivity for street level Geocoding and find address

CONNECTIVITY OPTION TO: MapInfo hosted Envinva Online Services EOLS for Geocoding, Find Address and Drive Region generation

Access to other Web Services support through MapBasic programmability

New Web Services toolbar added for quick access to capabilities

New web services interface to configure Web Services preferences include Proxy and HTTPS protocol.

DATA FORMATS: Support added for: the latest Air-photo USA Raster format, Inter map TIFF image format, ERDAS IMG format

Database Support: Oracle 10G and 9iR2, MS SQL Server 2000, MS Access XP, IBM Informix 9.4. Support for SQL Server 2005

SPATIAL DATA SUPPORT: Oracle Spatial 10G and 9iR2, Oracle Locator 10G, SQL Server 2000 with MapInfo Spatial Ware v4.8.1, Informix 9.4 with MapInfo Spatial Ware 4.5.2

SAVE WINDOW AS: Option to save a map window image along with geographic reference information, anti-aliasing for image smoothing options added

Mapping/Data Editing

Area Units

Save default thematic with a table

Column and expression persistence added to Browser windows

Automatically view results of query for Select and SQL Select

Ability to reproject and rotate raster and grid images on the fly

Option to smooth raster and grid files to get more info

Improved raster image registration dialogue—support for cross hair and larger data view

Extended support for Vertical Mapper Grid (GRD) files—support added for: 3D visualisation, Info

Maximum buffer resolution increased

Enhanced Redistricting capabilities now also include percent values based on district totals

Database Improvements

Use Primary Key for new table creation or when saving a remote copy

Added Primary Key auto-increment for Oracle databases

MapInfo data uploaded to remote databases is saved more precisely

Refresh DBMS Table button now refreshes all forms of ODBC type tables

User Interface Enhancements

Copy and paste from Message and Statistics windows

New Toolbar buttons added for commonly used functions

Status bar expanded to show more coordinates and file names

Dialogue boxes improved to show more information (Layer Control, Modify Table Structure, New Table Structure, Register raster)

Auto-trace tool enhanced—more visible line when tracing

New right click menu to quickly find selection

Output and Printing

Support for anti-aliasing for labels

Removal of 28,000 pixel limitation (facilitates printing of any size maps)

Better memory management for large prints

Tool included to print to PDF

Included tool to Export image or vector data to Google Earth

Tools

Universal Translator updated

Google Earth utility enhanced and now included in Tool Manager

Datum Enhancements

New ETRS-based Coordinate Systems

Swedish Coordinate System added

South African Coordinate System Zones added

Lithuanian Coordinate Systems

New Latvian Coordinate Systems

New Estonian Coordinate System

Improved Help System

Documentation for the MapInfo Professional Tools

Links to Web content

Customisable favourites

Improved navigation

Map Basic Enhancements

Added the following statements: EPSGToCoordSysString \$(), Geocode statements, Drive Region statements, ObjectNodeHasM(), ObjectNodeHasZ()

Added MapBasic accessor functions to HTTP, FTP and XML function calls

Enhanced the following statements: Create Object statement, Create Redistricter statement, Shade statement, UnitAbbr\$() function



FOR MORE INFORMATION VISIT
WWW.MAPINFO.COM/UPGRADE
OR CALL 1.800.327.8627.

Pitney Bowes MapInfo

EMEA/UK

Minton Place
Victoria Street, Windsor
Berkshire, SL4 1EG UK

Tel: +44 (0)1753 848200
Fax: +44 (0)1753 621140

europe@mapinfo.com
www.mapinfo.co.uk

SWEDEN—SOLNA

sweden@mapinfo.com

MAPINFO BENELUX—NETHERLANDS

benelux@mapinfo.com

MAPINFO GMBH—RAUNHEIM

germany@mapinfo.com

MAPINFO SPAIN—MADRID

spain@mapinfo.com

MAPINFO ITALY—ROMA

italia@mapinfo.com

MAPINFO AFRICA

africa@mapinfo.com

MAPINFO MIDDLE EAST

middleeast@mapinfo.com

MAPINFO EASTERN EUROPE

easterneurope@mapinfo.com

MapInfo Corporation is
Headquartered out of Troy, NY, USA


Be Location Intelligent™

MapInfo Professional 8.0 added:

Platform Support

Windows XP logo (Professional and Home support)
Windows 2000, Windows NT+SP6 and Windows 98SE
works the same as previous logo Certified versions;
Support for Windows 2003 Server with Terminal
Services and Citrix; Support for silent and unattended
installs added

Data access

OGC ENHANCEMENTS: Proxy Server support for OGC
Web Services; Preference Options added for Time out
settings for request, refresh WFS based on current
window, Import GML 2.1 support added; Display user
friendly projection names in WMS WFS dialogues; Smart
projection default added for WMS and WFS tables—
use current map projection if available; Control image
resolution to improve print quality or improve download
performance by reducing image resolution; ability to
index WFS tables adds search and fast query capability

DATA IMPORT: Import DWG/DXF (Autocad 2004
format), DGN v8 format, display ASRP 1.2 imagery,
open ESRI Grid data binary or text formats, Open CSV
files directly; Open 3D ESRI Shape files with M&Z
values directly

DATABASE SUPPORT: Oracle 10G, Oracle 10G locator,
MS SQL Server 2000, MS Access, IBM Informix.

SPATIAL DATA SUPPORT: Oracle Spatial & Locator,
MS SQL and Informix via spatial ware.

EXPORT WINDOW: Added more formats to export
windows option: GIF, LZW TIFF and TIFF CCITT Group 4

SAVE WORKSPACE: Save workspace as (MapInfo
Workspace XML Format) MWS now includes label
expressions, thematic expressions and query tables

Mapping/Data Editing

MapInfo geographic objects can store the following:

The node limit now is: 134 Million nodes per single
polyline or polygon object. Multi-polygon object limit is
now: 20,648,881 polygons per record. Polyline: theoretical
limit for number of segments per polyline is: 24,403,223
per polyline object; Multipoint object limit is 134,217,724
nodes per object.

Oracle Object Map Verification Enhanced To Support
Object/Map Validation—Detection of Bowties and
figure eights.

Option to Convert unsupported Geometries during data
upload (save as) to Oracle, Informix, and SQL Server.
Improved Performance when Creating Legends from/
for a Live Table; Support for Oracle Spatial Workspace
Manager including (server side data versioning) (1)
Enabling/Disabling Versioning for an Oracle spatial Table
(2) Creating/deleting/merging/refreshing and resolving
conflicts in Oracle Workspace tables

Option to Save as MapInfo native to allow Data Editing
when Opening the Following Data Files: CSV, XLS
and TEXT

User Interface Enhancements

File Open Dialogue Enhanced—clicking on a MapInfo
location also updates the file format filter (WOR/TAB);
Option to set per layer object insert styles in the layer list;
Layer Control has been enlarged to show more information.
A new layer list preference provides the option to Show
More Layer Information using ToolTips

More Room for Longer Statements in SQL Select Dialogue
Box. From 254 Chars to 1024 each. In addition, improve-
ments made to usability; Set default find style added to
preferences; Find selection in front window only added;
New find custom symbols added in custom symbol library
Mouse Wheel Support for Browser Window is now enabled
Custom Sort Order for Individual Value Thematic
Legends added

Option to create Bi-Variant Layer Using Transparent Patterns
Alignment of Thematic Legends and Legend Frames Added

Choice of Thematic Legend Swatch Sizes Added

Stream Digitising Added—auto node drop every set
pixels; Support for Orthogonal Polygons Added; Sync
Window usability Enhancements; Utility to remove and
counts duplicate rows in a table added; Distance
Calculator enhanced Functionality—find straight line
distance to highway plus improved Performance with
Distance Calculator; Workspace resolver utility added—
fix workspaces that do not have the correct file path or
have missing tables; New Thematic Templates—provide
improved cartographic options for thematic mapping

Datum Enhancements

Chinese Coordinate Systems

Guernsey Grid Coordinate System

Hellenic Geodetic Reference System

Baltic Projections (Lithuanian and Latvian)

New Zealand Geodetic Datum 2000

New Belgian Coordinate System

Additional British National Grid Coordinate System

GPS Support

Geographic Tracker Tool Upgraded—Garmin USB and
Serial support added

Map Basic Enhancements

Registering .CSV Files; Custom Sort Order Changes
(Set Legend)

Converting custom MapInfo Geometries Into valid
Geometries for Oracle, IBM Informix, and MS SQL Server;
Creating Legends on a Live Table; Draw Orthogonal
Polygon Changes; Enable Alignment of Thematic Legends;
Enabling Transparent Patterns on Same Layer

Export Windows to Additional Formats; Find Nearest
Functionality commands added

Increase Choice on Thematic Swatches for Cartographic
Legends

Map Basic Support for the Increase in Nodes, Polygons,
and Polyline Allowed—Updated the variable type that
stores the node count