

DATA SHEET

MapXtreme® 2008

DEVELOPERS CAN QUICKLY ADD LOCATION, MAPPING AND ANALYSIS CAPABILITIES INTO .NET WEB-FACING OR INTERNAL APPLICATIONS.



Summary

Organizations are realizing the benefits of including location intelligence as part of their day-to-day operational and analysis tools. This additional capability has many benefits including:

- Helping employees make more informed decisions
- Improving customer services
- Augmenting facility and asset management
- Enhancing planning and organizational responsiveness

Benefits

- 100% .NET object model
- Enables application development of map-centric or map-enabled applications for use throughout an organization
- Provides a single environment for deployment of applications to desktop or the web
- Complies with both geospatial and IT industry standards ensuring interoperability
- Includes the addition of many new features and functions

OVERVIEW

MapXtreme® 2008 is an ideal development tool for creating map-centric and map-enabled applications for deployment to an organization. Leading organizations in the public and private sectors use mapping and location-based decision and analysis support systems to make better strategic decisions on where to market and sell, manage and protect physical assets as well as transport products more efficiently. With applications developed in MapXtreme 2008, your organization can visualize and analyze data in order to discover new relationships and trends not apparent using traditional methods such as spreadsheets and reports. MapXtreme 2008 helps you meet the needs and expectations of your organization—both today and tomorrow.

MapXtreme 2008 enables you to create custom mapping applications and map-enabled applications for deployment in both Microsoft Windows desktop and web environments.

MapXtreme 2008 SDK

Designed for Microsoft® Windows® programmers who are familiar with the Microsoft .NET development environment, the MapXtreme 2008 SDK enables you to develop applications and solutions that incorporate location within your existing

systems and infrastructure. It provides you with the ability to develop desktop or web solutions for smart-client, client server, intranet/extranet or mixed environments.

The MapXtreme 2008 object model is 100% .NET so developers experience a tight integration with Microsoft Visual Studio® with the most usable .NET spatial SDK available.

Desktop Deployment

The MapXtreme 2008 desktop development option includes numerous map application templates that automatically configure and load the mapping environment for the deployment type chosen. This includes commonly used map control tools, sample applications, and drag and drop development functionality. MapXtreme 2008 desktop option provides full support for Microsoft .NET languages such as VisualBasic.NET and C#.

Web Deployment

Much like the desktop development option, MapXtreme 2008 facilitates the rapid development of web applications by providing map application templates, multiple map control tools, sample applications and drag and drop development functionality. All web deployable .NET languages, such as ASP.NET, can be used with MapXtreme 2008.

MapXtreme® 2008

Features and Functions

Single Offering

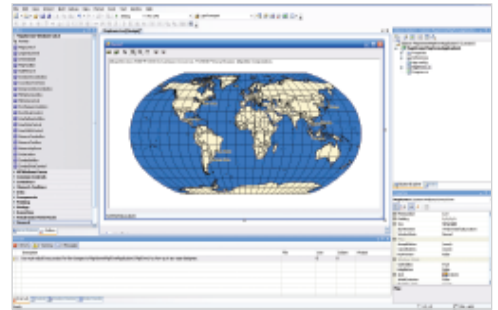
- Single SDK product for the development of both web and desktop applications
- Efficient sharing and re-use of code and knowledge between deployment types
- Common and consistent desktop and web development experience

Ease-of-use

- Full integration with Visual Studio.NET development environment
- Drag-and-drop functionality to facilitate application development
- Pre-defined map templates and sample applications to facilitate rapid application development
- Flexibility to develop applications using the .NET language of your choice making efficient use of the IT skills within your organization

Interoperability

- Support for IT standards including Microsoft .NET, ADO.NET and SQL-3
- Support for geospatial standards including Open Geospatial Consortium protocols (WMS and WFS)
- Access to your data "where it lives" within your organization using standard data access protocols including ADO.NET, ODBC, Oracle Spatial and Microsoft SQL Server



MapXtreme 2008 integrates seamlessly into Microsoft Visual Studio 2008.

- Integration of location capabilities into third-party business intelligence systems
- Incorporation of location capabilities such as geocoding and routing within your application

Feature Rich

- Superior data access engine with improved functionality and performance through the use of flexible cursors, a source-agnostic approach to data and the use of industry standard query languages
- WMS and WFS server and client capabilities
- Built-in extensible user interface toolbars and dialogue facilities for rapid development
- Enhanced flexibility of display options including curved labeling, improved symbology and fill patterns
- Additional functionality through improved granularity (i.e., improve the clarity of maps by separating elements, attribute data and analysis results for better display placement and draw order control)

VISIT WWW.MAPXTREME.COM TO DOWNLOAD THE FREE EVALUATION VERSION.

UNITED STATES

One Global View
Troy, NY 12180-8399

main: 518.285.6000
1.800.327.8627
fax: 518.285.6070

sales@mapinfo.com
www.mapinfo.com

4200 Parliament Place
Suite 600
Lanham, MD 20706-1844

main: 1.800.327.8627
info@g1.com
www.g1.com

CANADA

26 Wellington Street East
Suite 500
Toronto, Ontario
M5E 1S2

main: 416.594.5200
fax: 416.594.5201

canada.sales@mapinfo.com
www.mapinfo.ca



SPECIFICATIONS

Data Specifications

Supported Environments

MapXtreme 2008 supports a wide variety of spatial and non-spatial databases and file formats.

Databases

- SQL Server 2000, 2005
- Informix IDS 9.3, 9.4
- Oracle® 9i, 10g
- Microsoft Access

- SpatialWare for Microsoft SQL Server and IBM Informix

Operating Systems

- Windows 2000, 2003, 2008, XP and Vista

Development Frameworks

- Microsoft .NET Framework 1.1, 2.0, 3.0 & 3.5
- Visual Studio®.NET 2005 & 2008
- Visual C# Samples
- VisualBasic.NET Samples