

DATA SHEET

# MapInfo® Manager v1.1

## Spatial Data Asset Management

TAKE COMMAND OF YOUR SPATIAL ASSETS – CATALOG, PUBLISH AND SHARE YOUR DATA



### Summary

Pitney Bowes MapInfo Manager enables organizations to build and manage a single point of truth for their spatial assets – facilitating easy discovery and optimizing access for users throughout the organization. Utilizing open standards, MapInfo Manager is accessible to a wide variety of potential users. MapInfo Manager integrates with the industry leading MapInfo Professional supporting an efficient user adoption process.

### Benefits

- Provides an easily searchable, industry standard, central catalog for spatial data
- Save costs by avoiding duplicate data collection or purchases
- Increase visibility of the characteristics and appropriate uses of your data
- Ensure organizational compliance with spatial data infrastructure standards, like ISO and OGC

### OVERVIEW

Pitney Bowes® MapInfo® Manager™ is a server based application that provides the necessary tools to build and manage a centralized library for your organization's spatial data assets. This includes creating one or more easily searchable catalogs of spatial data as well as tools to populate a catalog with the required information about your datasets, making that data easily deployable.

Whether you store your data in a spatial database or as native files, or a combination of both, MapInfo Manager provides easy, powerful control over all of the spatial assets.

#### Questions to consider:

- Do you have a large number of MapInfo Professional tables in use?
- Do you find users make copies of MapInfo Professional tables because they are hard to find?
- Is time wasted by users searching for the data they need?
- Are your expert users spending too much time helping colleagues find the data they need?
- Have data sets been used inappropriately because they were not well defined?
- Have data collection or cleanup efforts been overlapped or duplicated?
- Are one or more personnel policing data stores, network volumes and/or directory structures?
- Have useful data sets been discovered that had remained hidden due to lack of visibility within the organization?

- Has duplicate data been purchased by different departments within your organization?

### Metadata – The Key to Realizing Data Potential

The core benefit of MapInfo Manager is its catalog of your organization's enterprise spatial data. This catalog consists of metadata which is the information describing your data. Metadata can include information such as the vintage, source, owner, origin, location, geographic area and more. It essentially establishes a data set's purpose for anyone who discovers the data. A catalog of metadata assists users in finding and accessing the data they require as well as understand the suitability of a data set for a specific purpose. If there are questions about the data, then the "owner" or custodian of the data can also become known through the metadata.

The metadata catalogs created in MapInfo Manager are built using the Open Geospatial Consortium (OGC) Catalog Services Web (CSW) standard and therefore can be searched by MapInfo Professional users (working with the Catalog Browser capability introduced in MapInfo Professional v10.5) along with other OGC compliant CSW service applications.

#### Creating and Editing Metadata

With MapInfo Manager, building a library of metadata is very easy. Some of the metadata can be obtained in an automated manner and done in a bulk collection effort, referred to as harvesting. Harvesting is useful for those metadata items that can be determined in an automated fashion.

# MapInfo® Manager v1.1

## Spatial Data Asset Management

### UNITED STATES

One Global View  
Troy, NY 12180  
1.800.327.8627  
pbbi.sales@pb.com  
www.pbinsight.com

### CANADA

26 Wellington Street East  
Suite 500  
Toronto, ON M5E 1S2  
1.800.268.3282  
pbbi.canada.sales@pb.com  
www.pbinsight.ca

### EUROPE/UNITED KINGDOM

Minton Place  
Victoria Street  
Windsor, Berkshire SL4 1EG  
+44.800.840.0001  
pbbi.europe@pb.com  
www.pbinsight.co.uk

### ASIA PACIFIC/AUSTRALIA

Level 7, 1 Elizabeth Plaza  
North Sydney NSW 2060  
+61.2.9437.6255  
pbbi.australia@pb.com  
pbbi.singapore@pb.com  
pbbi.china@pb.com  
www.pbinsight.com.au

Certain metadata fields may be common to some or all of your datasets (such as the owner). Repeated values can be applied automatically through the use of templates. In addition, edits and modifications to metadata can be done to individual records or to multiple records at once.

### Share – Simplify – Control

MapInfo Manager enables data custodians, GIS managers and IT administrators to control how data is published, how it can be discovered and how it can be accessed by a targeted user base.

Multiple catalogs can be created and shared. Having multiple catalogs can aid in publishing specific data sets to various audiences. Perhaps an organization wants to publish a metadata catalog for external consumption and another for internal consumption. For example, A local municipality wants to publish a metadata catalog of parcel data to the public. The public in this instance needs to know only the parcel size, geographic boundaries and assessment value. The municipality may have a different, more detailed data set for internal, government employees to use. This would result in two catalogs created, referencing two very different data sets.

MapInfo Manager also enables data to be published as an image via a Web Map Service (WMS).

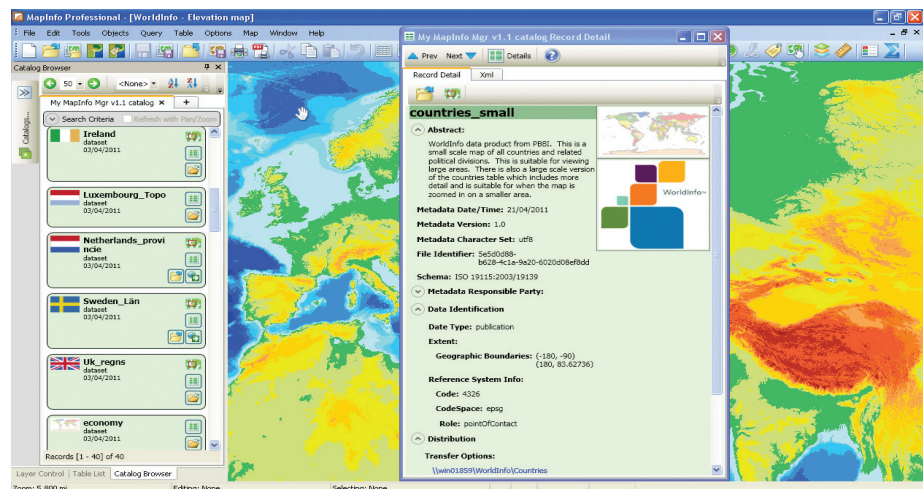
### Standards Compliant

MapInfo Manager adheres to various standards to maximize system and agency interoperability including ISO 19115 for metadata statements, OGC for catalog and data publishing, and many others. For those organizations directly or indirectly impacted by the European Union INSPIRE directive, MapInfo Manager utilizes the necessary standards to meet your INSPIRE requirements.

### MapInfo Manager Benefits

- “Single point of truth” reference library for your spatial data.
- Location Intelligence and GIS users can quickly and easily find and access the data they need, saving time and resources.
- Communicate the intent and purpose of the data to avoid mis-use or mis-interpretation.
- Saves on costs and effort by avoiding data duplication and prevents duplicate data purchases.
- Integrates with any OGC CSW compliant application and directly integrates with MapInfo Professional.
- Publish data via OGC WMS to protect the data from unwanted edits.

FIND OUT MORE ABOUT MAPINFO MANAGER BY VISITING [WWW.PBINSIGHT.COM](http://WWW.PBINSIGHT.COM) OR CALL US TODAY AT 800-327-8627.



MapInfo Manager creates a single point of truth for your MapInfo spatial assets – accessible from MapInfo Professional or any other standards compliant application (OGC CSW).

### Every connection is a new opportunity™

